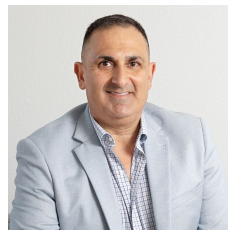


**1/11 Indigo Loop Yallah NSW**

- \* 373 sqm industrial warehouse
- \* High clearance electric roller door
- \* Up to 6.6m internal high clearance warehouse
- \* Ground floor office & disabled friendly amenities
- \* Allocated tenant and visitor parking
- \* Good access with separate entry and exit driveway

**Type** : Industrial  
**Price** : \$75,000 + GST + OGS pa  
**Building Size** : 373.3 sqm  
**View** : <https://www.whkcommercial.com.au/lease/nsw/wollongong-illawarra/yallah/commercial/industrial/8703287>



**Harry Stefanou**  
02 4229 6640

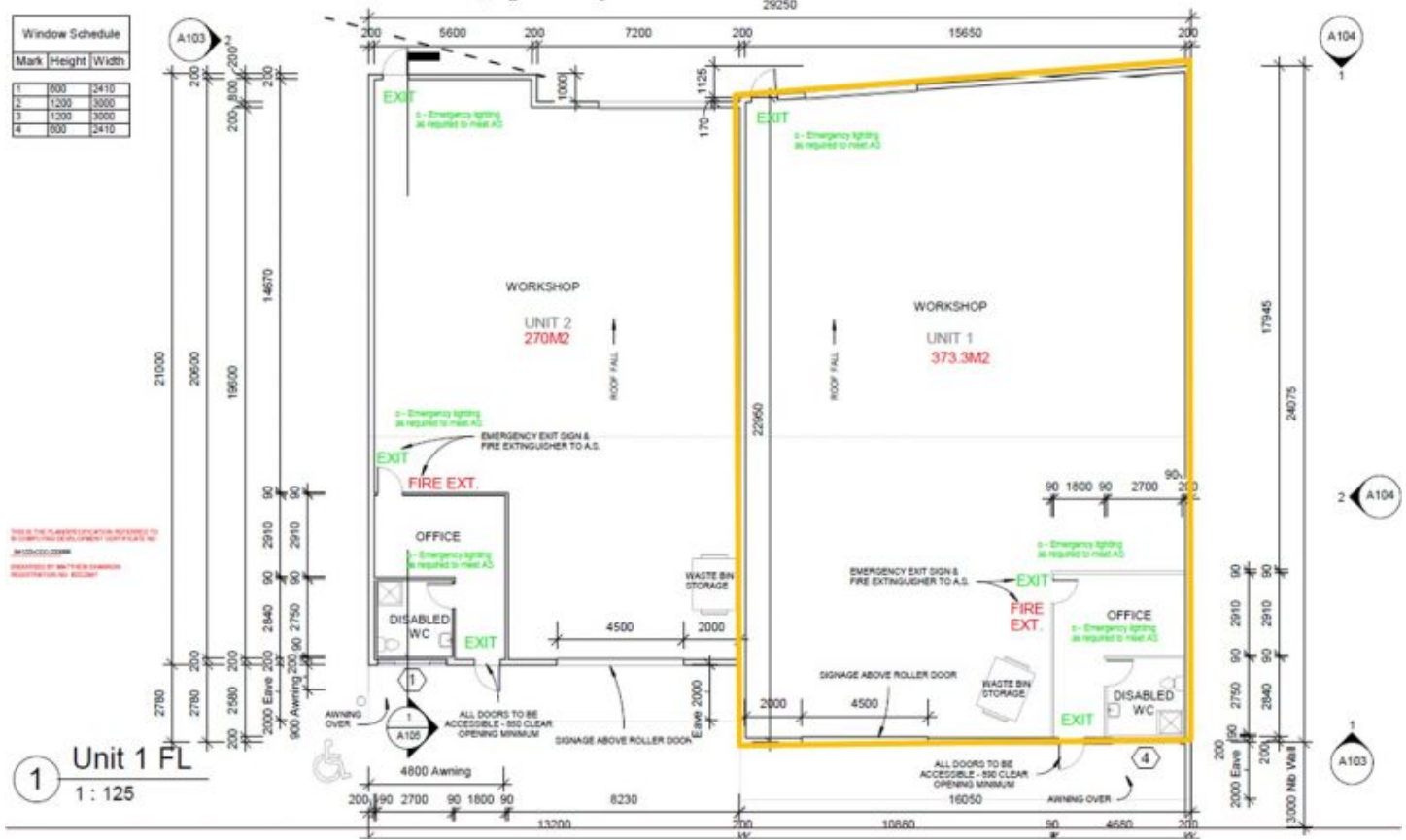


**Mark Marinelli**  
02 4229 6640

Window Schedule		
Mark	Height	Width
1	600	2410
2	1200	3000
3	1200	3000
4	600	2410

**1** Unit 1 FL  
1:125

NOTE: THE NUMBER OF WINDOWS REQUIRED TO BE GUARANTEED FOR COMPLIANCE WITH AS/NZS 2209:2008  
AS/2209:2008



**1** A103

**2** A104

**1** A103

**1** A104