

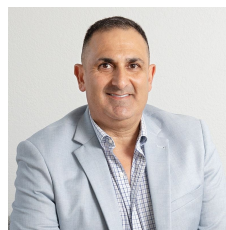


2/88 Kembla Street Wollongong NSW

- * 98 sqm of retail space in the Wollongong CBD
- * Potential uses include - Cafe / Restaurant / Bar with potential late night opening hours - all STCA
- * Currently fit out as take away/cafe space with commercial kitchen and seating
- * Internal space 75 sqm and 23 sqm outdoor seating with internal bathroom facilities
- * High traffic location both day and night
- * Surrounded by well established operators

[For full version visit the website](https://www.whkcommercial.com.au)

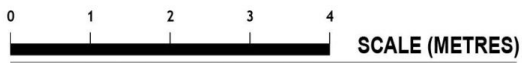
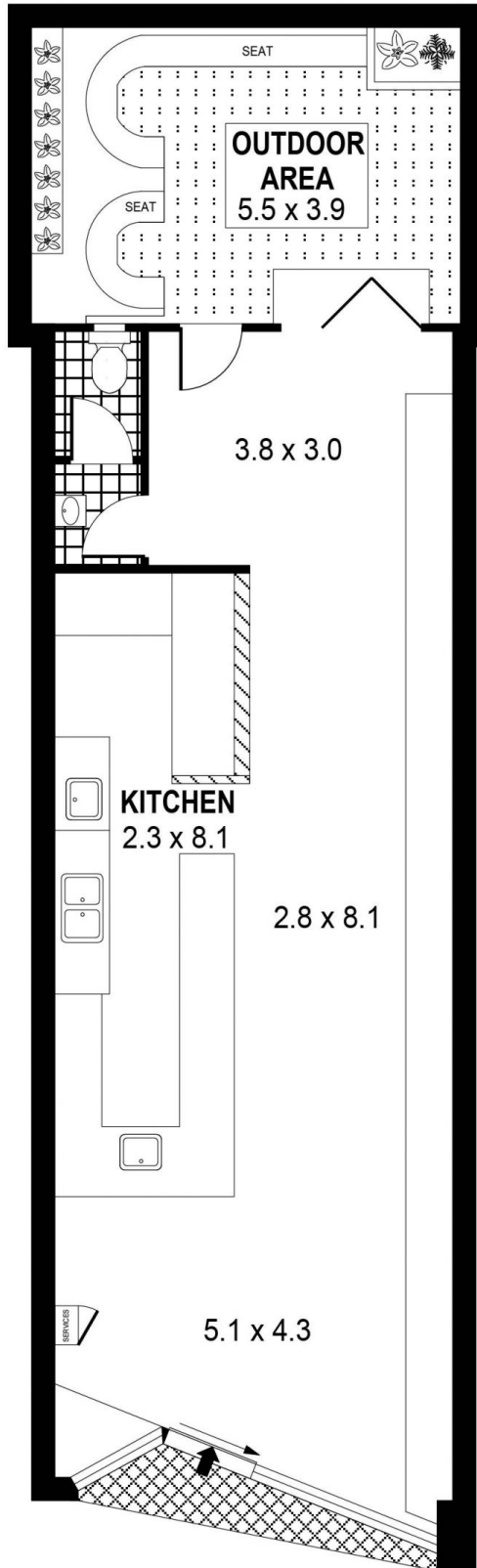
Type	: Retail
Price	: \$47,100 + GST + Outgoings pa
Building Size	: 75 sqm
Land Size	: 98 sqm
View	: https://www.whkcommercial.com.au/leases/nsw/wollongong-illawarra/wollongong/commercial/retail/8697640



Harry Stefanou
02 4229 6640



Elena Koroleva
02 4229 6640



PLANS SHOWN ONLY INDICATIVE OF LAYOUT. DIMENSIONS ARE APPROXIMATE.
Ref. No: 010806



INT : 75m²
EXT : 23m²

SHOP 2, 88 KEMBLA STREET

WOLLONGONG